

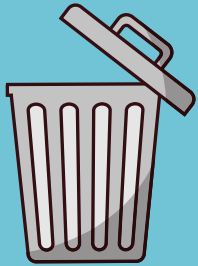


SOLID WASTE ORDINANCE REVISIONS



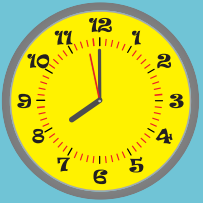
TRASH BAGS

- Requires all trash to be secured in bags between 13 to 32 gallons in size.
- Loose items placed on or around the bags(s) will not be allowed.
- Boxes can not be used as a bag.
- Place small boxes in bags.
- Flatten large boxes, placing them next to the trash can.
- Customers interested in purchasing City trash bags, visit www.cityofmesquite.com/SolidWaste.



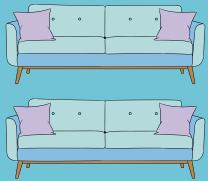
TRASH CANS

- Requires all trash to be placed in trash cans 20 - 48 gallons in size.
- Customers with cans larger than 48 gallons are allowed to use them until they get a properly sized can.
- Lids are not required, but preferred to keep animals out of can.
- Cans must be placed in alley or front curb of house.
- There is no limit on the quantity of cans that can be placed for service.
- Loose trash placed in the container will not be allowed.



TIME

- Trash or recyclables to be placed out no earlier than 5:30 p.m. the day before scheduled pickup.
- Trash or recyclables to be placed out no later than 7:30 a.m. the day of scheduled pickup.
- All trash cans must be removed by 8 p.m. the day of pickup.
- Large items/Bulk Trash to be placed out no earlier than 24 hours prior to scheduled collection day.
- This does not apply to yard waste and brush collection.



BULK TRASH

- Bulk trash must be under eight cubic yards which is 5' high x 4' deep by 11' long. *(Approximately 2 full size pick-up truck beds or 2 couches).*
- This does not apply to yard waste and brush collection.



SPECIAL CIRCUMSTANCES

- Customers who have unique situations are encouraged to contact the City for assistance.
- Call the Solid Waste Division at 972-216-6285 or 972-216-6284.

The City will only apply fees for additional services that its staff has to provide to solid waste customers. Before any fee is applied to a customer's bill, there will be an administrative review by City staff including photographic evidence. Special exceptions to these revisions will be made for solid waste services impacted by holidays.