

CITY OF MESQUITE

Financial Statement Overview

Year-to-Date through December 31, 2016

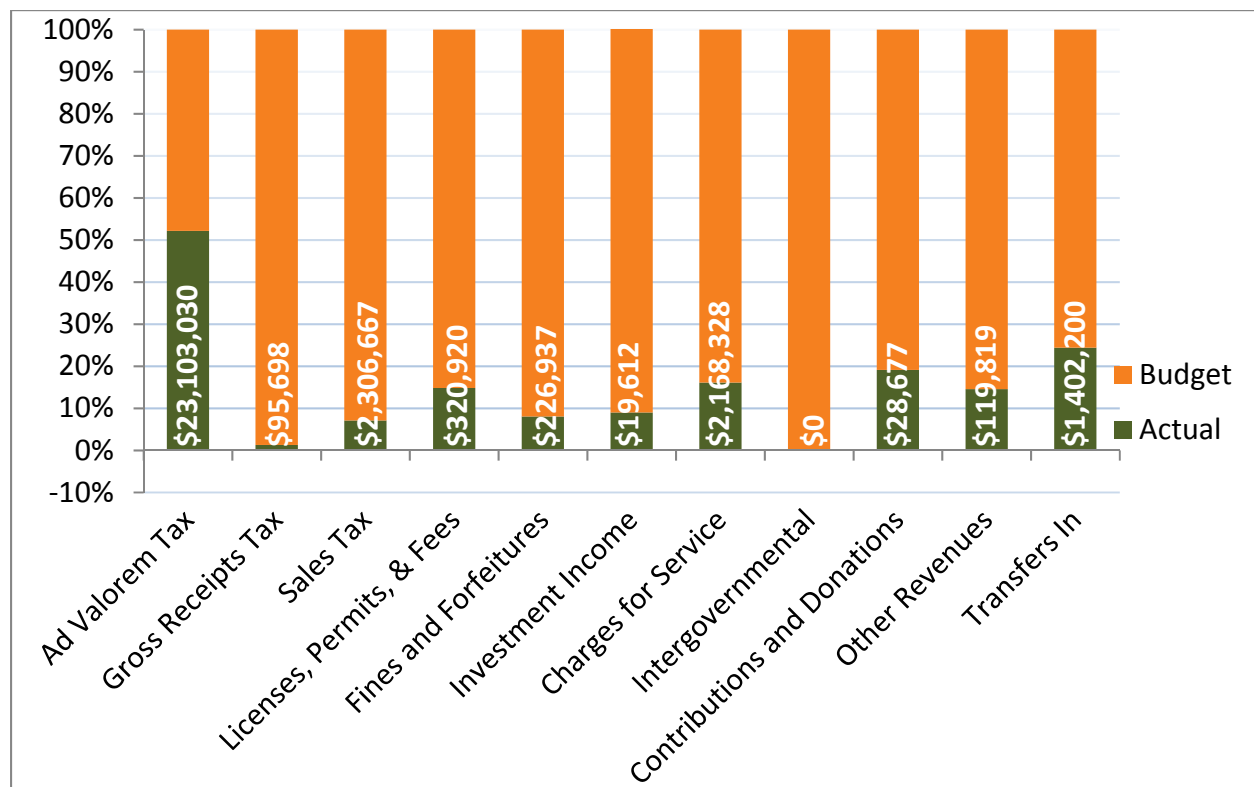


Highlights from each of the funds reported in the Year-to-Date Financial Statements through December 31, 2016 are as follows.

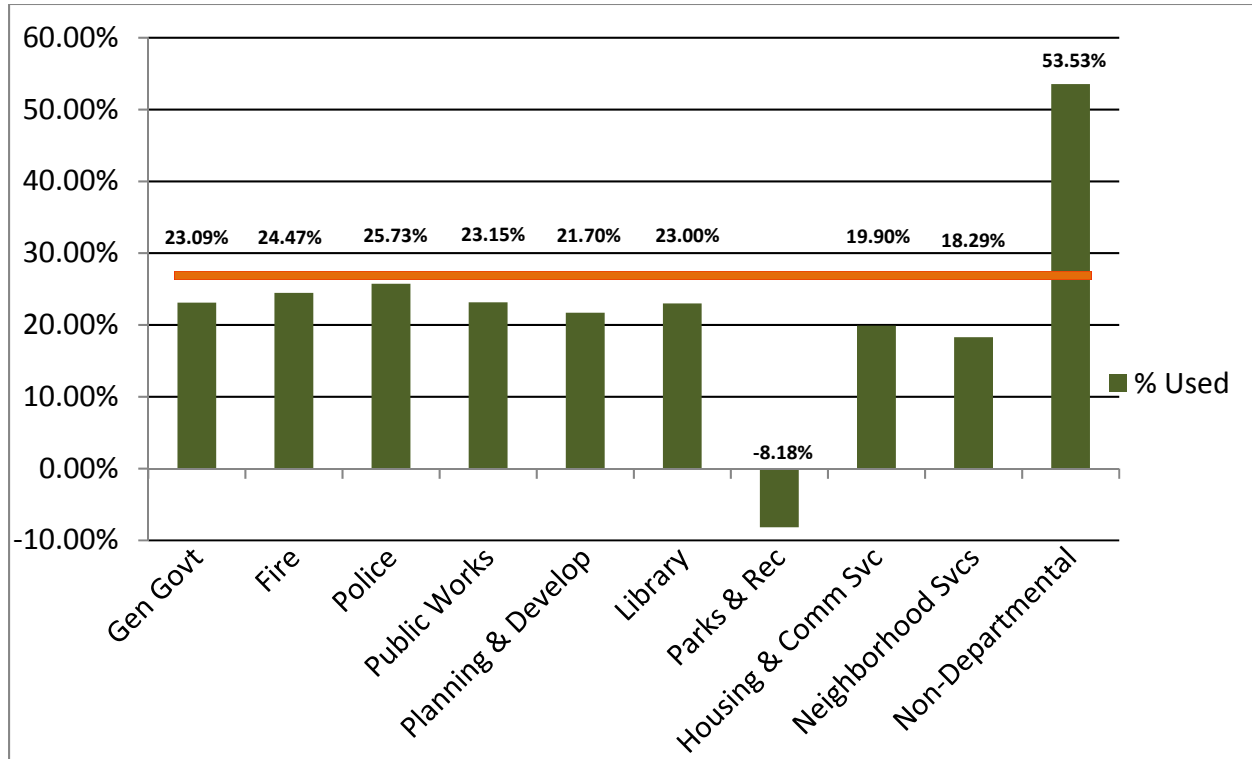
GENERAL FUND

- Cash balance up \$1.8 million compared to prior year
- FY2016 Revenues over expenditures \$1.6 million is major part of increase in cash balance
- Variance analysis
 - Increase in current assets of \$3.5 million (-)
 - Increase in current liabilities of \$3.5 (+)
 - Revenues \$2.0 million more than prior year (+)
 - Expenditures \$1.8 million more than prior year (-)
- Revenue highlights
 - Property tax percent collected through December for current taxes is 50.7% as compared to 50.02% in prior year
 - Property tax revenue up \$3.4 million due to increased taxable values
 - Sales tax revenues are comparable to prior year; expected to level out this year
 - Fines and forfeitures are down \$326,000 mainly in traffic and criminal fines due to year-end accrual for 60 day receipts into new year
 - Charges for service down \$534,000 due to year-end accrual for 60 day receipts of Ambulance Services; Golf course is now in a separate fund

GENERAL FUND REVENUES: BUDGET TO ACTUAL



GENERAL FUND EXPENDITURES: PERCENTAGE OF BUDGET USED



- Expenditure highlights
 - December is 25% of the fiscal year; most areas are at or below 25%
 - Parks and Recreation below due to timing of expenses for special events and summer program activity; 4B reimbursement is level throughout the year
 - Housing and Community Services had a staff vacancy at the Animal Shelter that was filled in February
 - Neighborhood Services had staff vacancies that have been filled in January
 - Non-departmental is ahead of year-to-date budget due to the debt service payments that are due in March; this will level out throughout the year

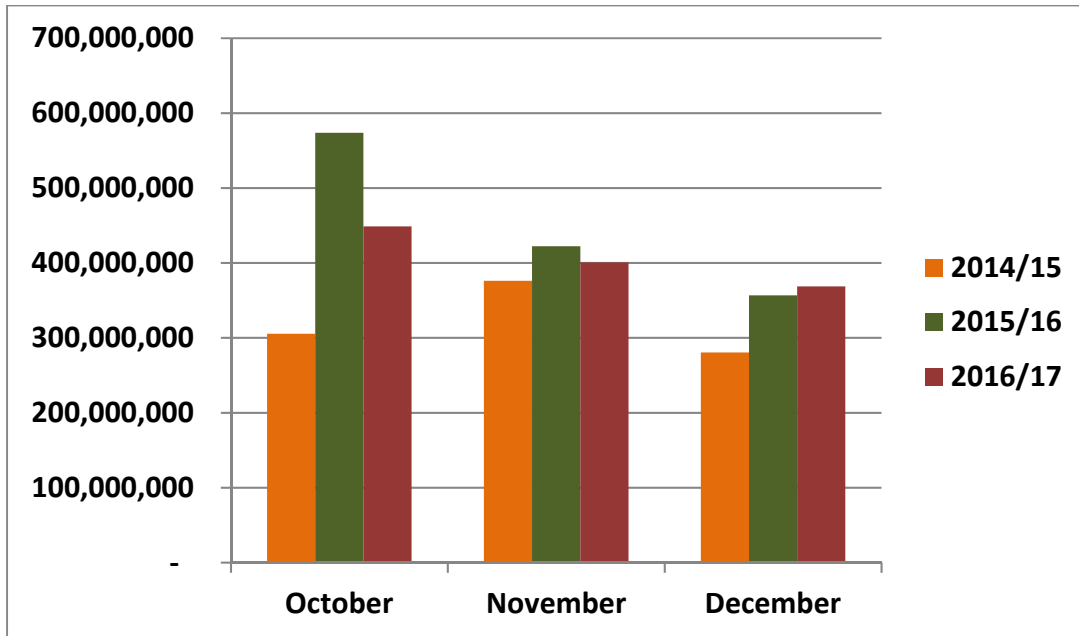
(4B) MESQUITE QUALITY OF LIFE CORPORATION FUND

- Cash balance up \$1,454,874 compared to prior year; project spending takes place over multiple fiscal years
- Main projects included
 - Transportation – traffic management system, Military Parkway trail
 - Parks and Rec – park operations, highway corridor maintenance, Vanston Park

WATER SEWER OPERATING FUND

- Working Capital increase of \$4.4 million mainly from fiscal year 2016 results
- Building for stronger Days of Working Capital and All in Coverage Calculation for rating agencies
- Normal fluctuations in receivables and payables
- Revenues are comparable to prior year due to 10% rate increase offset by 9.9% reduction in consumption for 1st quarter
- Expenditures up for purchased water and wastewater treatment charges due to NTMWD increases

MONTHLY GALLONS OF WATER BILLED: THREE-YEAR COMPARISON



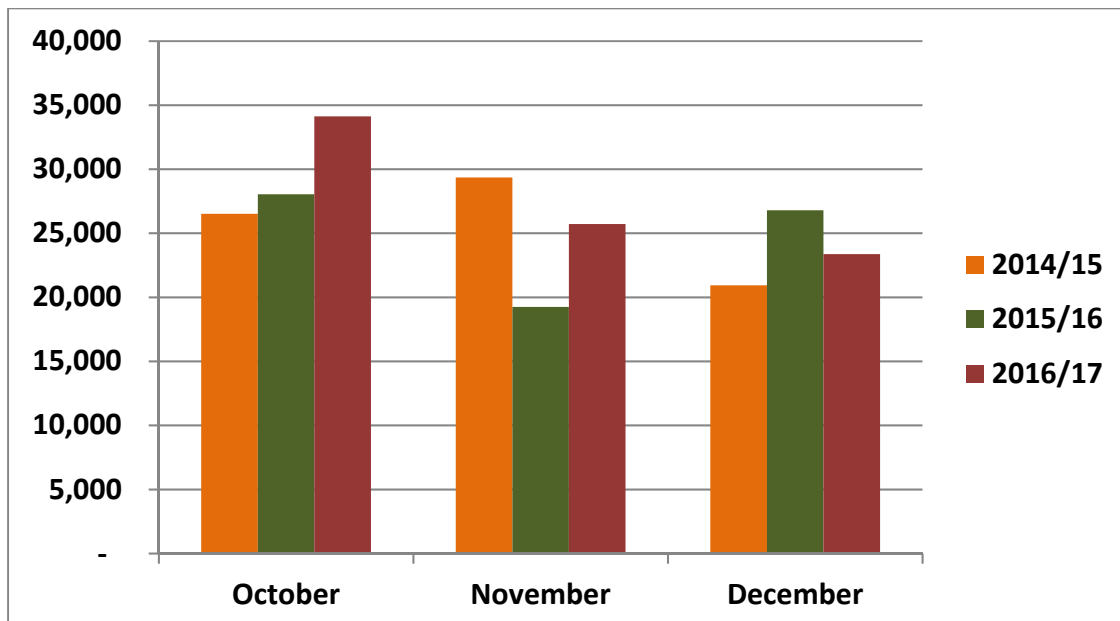
DRAINAGE UTILITY DISTRICT FUND

- Working Capital decrease of \$460,661 as planned for project spending
- Revenues are up slightly by \$42,380
- \$2,500,000 planned for drainage improvement projects (Palo Verde erosion control; Motley Drive and Town East Blvd drainage)

MUNICIPAL AIRPORT FUND

- Net income year-to-date of \$7,085
- Hangar rentals up slightly compared to prior year
- Fuel sales 9.8% less than prior year due to lower cost of fuel; fuel sales price is set at a percentage of cost; gallons sold are 12.3% more year-to-date compared to prior year
- Fuel cost up slightly; profit margin of 29% for the 1st quarter

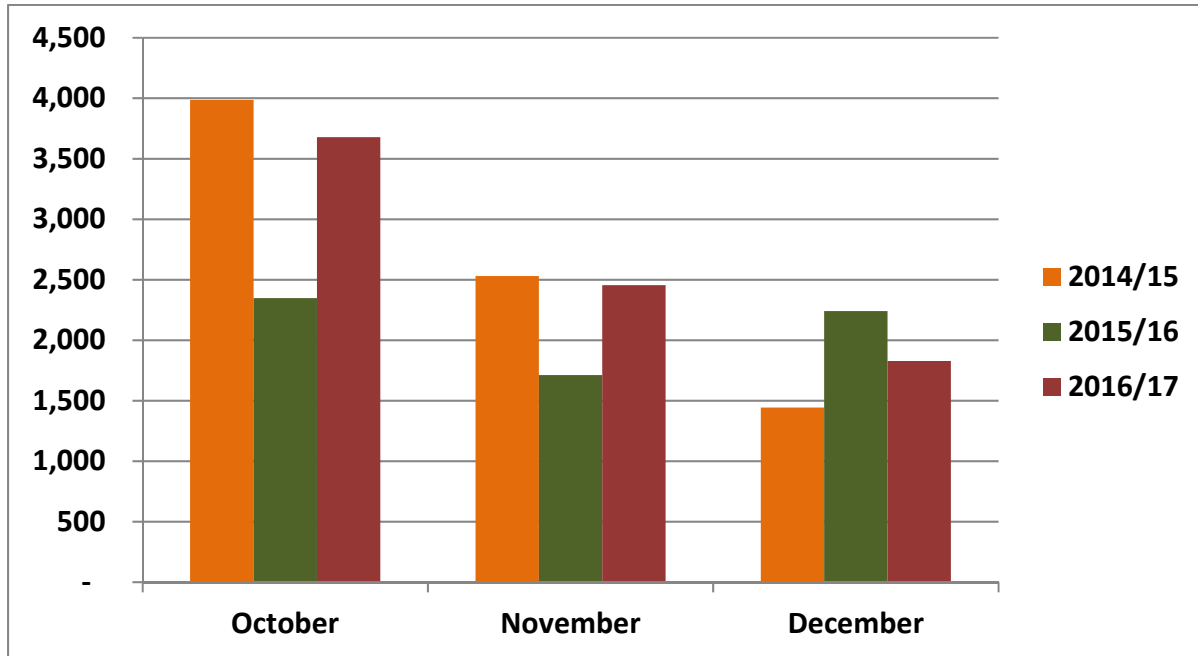
MONTHLY GALLONS OF FUEL SOLD: THREE-YEAR COMPARISON



MUNICIPAL GOLF COURSE

- Net loss year-to-date of \$50,3232 (prior year net loss through 1st quarter was \$134,927)
- Overall revenues are up 26.5% compared to prior year
- Year-to-date rounds of golf are up 26.4%
- Overall expenditures are \$39,365 less than the prior year or 12.9%

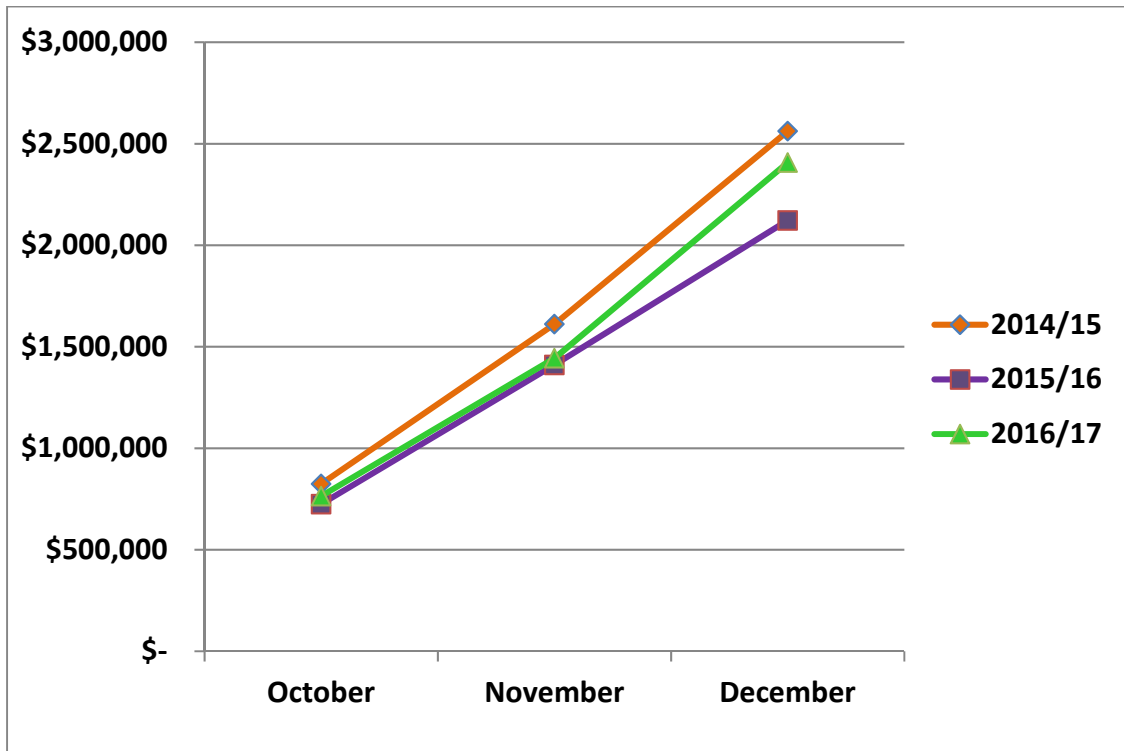
MONTHLY ROUNDS OF GOLF: THREE-YEAR COMPARISON



HEALTH CLAIMS FUND

- Revenues on track with budget and comparable to prior year
- No rate increase in FY2017
- Net loss y-t-d of \$109,247
- Stop Loss insurance check received in February to offset high claims in the fall \$283,193
- Health claims are \$285,343 more year-to-date than last year; a few large claims in the fall
- Pharmaceutical costs \$109,329 less than prior year due to BCBS discounts
- Significant plan changes in plan year 2016 and 2017 in order to turn negative fund balance around

**HEALTH CLAIMS EXPENDITURES CUMULATIVE YEAR-TO-DATE
THREE-YEAR COMPARISON**



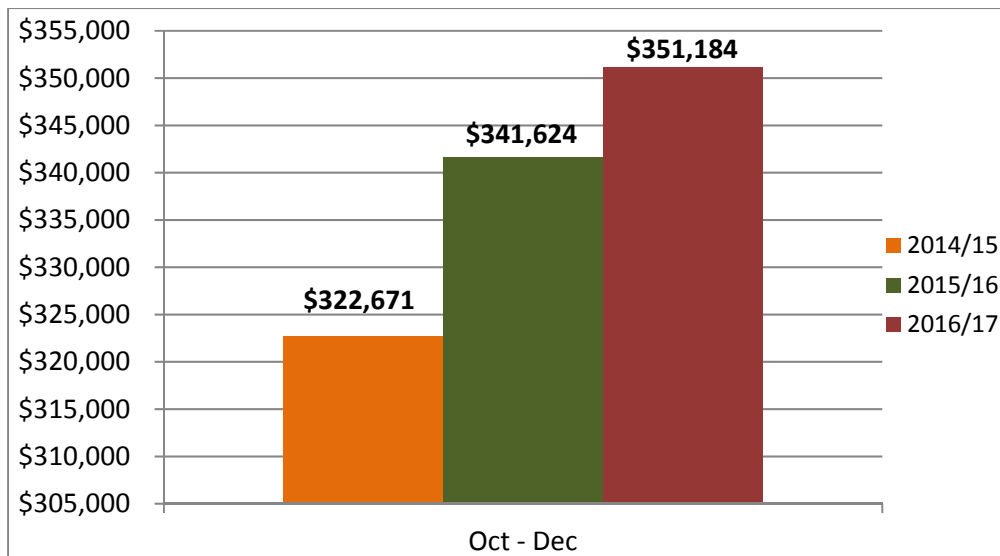
GENERAL LIABILITY FUND

- Net income year-to-date of \$183,473
- Departmental rates were adjusted to increase funding
- Other expense amount is for two police cars replaced due to accidents

HOTEL OCCUPANCY TAX FUND

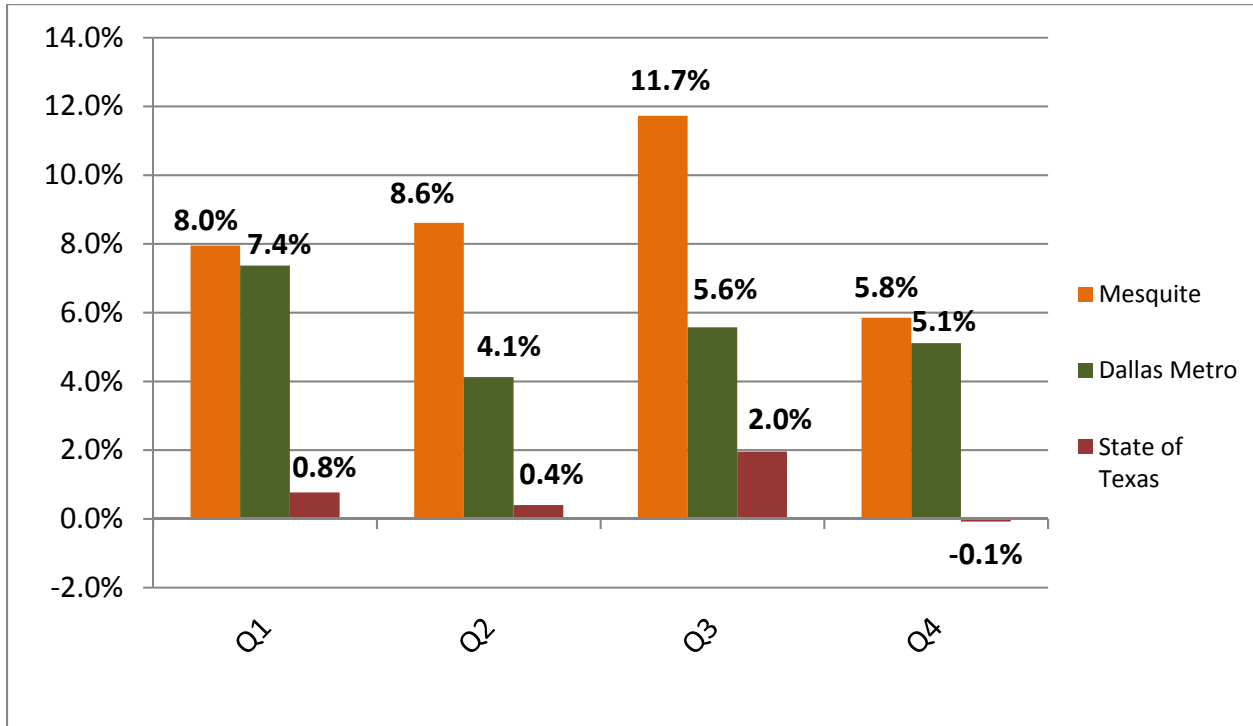
- Net income year-to-date of \$125,114
- Year-to-date revenues up 3% over prior year

**QUARTERLY HOTEL OCCUPANCY TAX COLLECTED
THREE-YEAR COMPARISON**



**HOTEL OCCUPANCY HISTORICAL ANALYSIS
MESQUITE – DALLAS METRO – STATE OF TEXAS**

**QUARTERLY AVERAGE DAILY ROOM RATE
PERCENTAGE CHANGE FY15 COMPARED TO FY16**



**QUARTERLY OCCUPANCY RATE
PERCENTAGE CHANGE FY15 COMPARED TO FY16**

